

Fontana Calvados Chrome Single Handle Deck Mount Kitchen Sink Faucet



PRIOR TO INSTALLATION

Please read installation instructions below. All plumbing should be installed in accordance with applicable building codes and regulations.

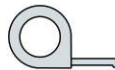
Unpack and inspect the items for any shipping damages. If you find damages, do not install.

All products must be installed by a professional and certified plumber otherwise warranty may be voided.

POSSIBLE TOOLS REQUIRED*



Plumbers Tape



Tape Measure



Level



Adjustable Wrench



Hex Wrench



Thread Sealant



Drill



Pencil or Marker

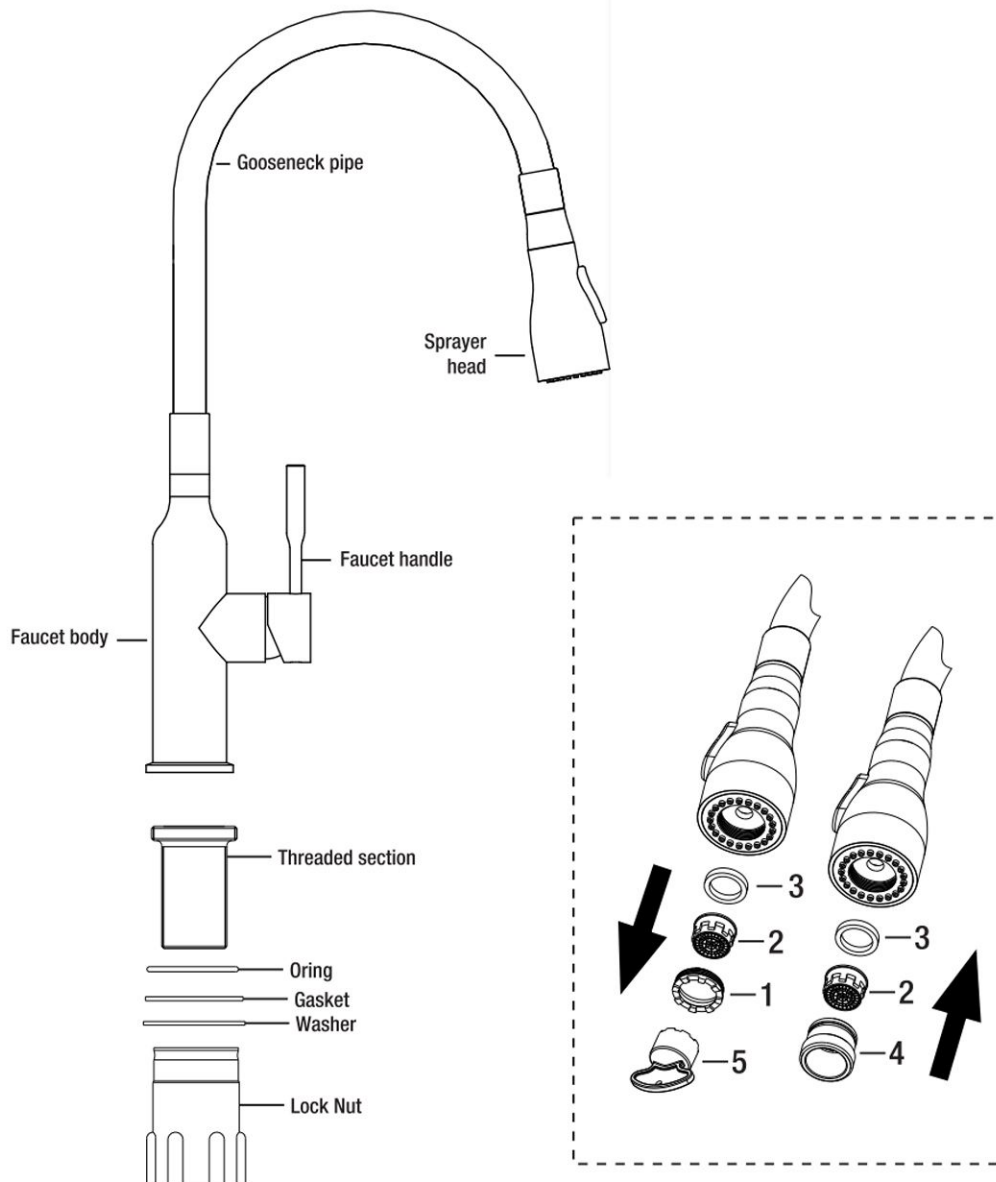


Screwdriver

*not included

Installation Instructions:-

1. Carefully take out all the parts of the faucet assembly (A). The faucet is pre-assembled.
2. Install the threaded section onto the faucet body.
3. Place the faucet body and the oring carefully through the hole in the sink. A second person may be required to hold the body in place until the faucet installation is complete.
4. From underneath, install the washer, gasket and lock nut to the exposed threaded section of the faucet. Tighten the lock nut by hand until it is snug.
5. If you want to connect the faucet with garden hose, remove the aerator shell (1), aerator (2) and washer (3) from spray head by the aerator wrench (5). Then reinstall the washer (3) into the spray head, and thread the connector (4) onto the spray head.

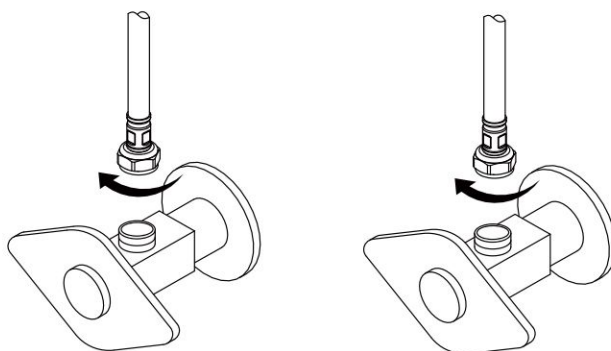


Making the water supply connections

CAUTION: The hot and cold inlet tubes are indicated by their colors: red means hot and blue means cold. Avoid twisting wires together or placing the wires close to each other and damaging.

- Thread the nut on the supply hose(G) onto the outlet of the water supply valve and tighten with a wrench.

Do not overtighten.



Flushing and checking for leaks

CAUTION: After installation is completed, turn on the hot and cold water supplies. Check for leaks.

- Turn on the water supply and the faucet handle. Flush the water for one minute. This flushes away any debris that could cause damage to internal parts.

- Check all connections part for leaks. Re-tighten any connections if necessary, but do not overtighten.

Care and Cleaning

- To clean, wipe down with a damp cloth and dry with a towel.

- Do not use abrasive cleaners, steel wool, or harsh chemicals when cleaning this faucet, or the warranty will be voided.